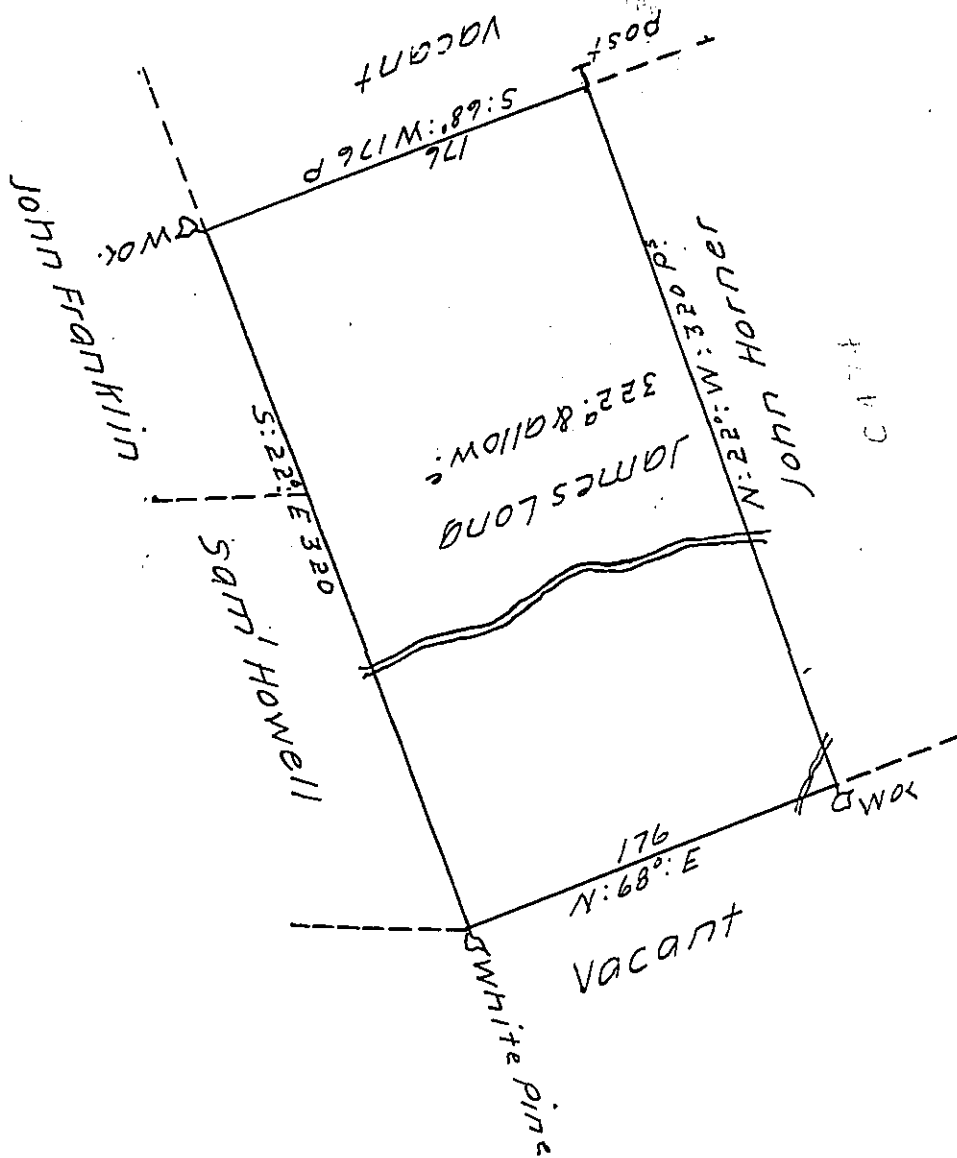


✓



A Draught of a Tract of Land Called _____ Situate on the southerly side of the North East Branch, on the Waters of Little Waphallapane adjoining land Surveyed to John Horner and others in the County of Northumberland Containing three hundred and thirty two Acres besides the Usual allowance of 6 Percent for Roads &^{ts} Surveyed the 11th day of April 1774 for James Long in Pursuance of A Warrant dated the 28th day of January 1774.

by Cha^s Stewart D^y SUR^r

To John Lukens Esq^r Survey^r Gen^l

IN TESTIMONY that the above is a copy of the original remaining on file in the Department of Internal Affairs of Pennsylvania, made conformably to an Act of Assembly approved the 16th day of February, 1833, I have hereunto set my Hand and caused the Seal of said Department to be affixed at Harrisburg, this twenty-third day of February, 1912.

Henry Howell

Secretary of Internal Affairs.